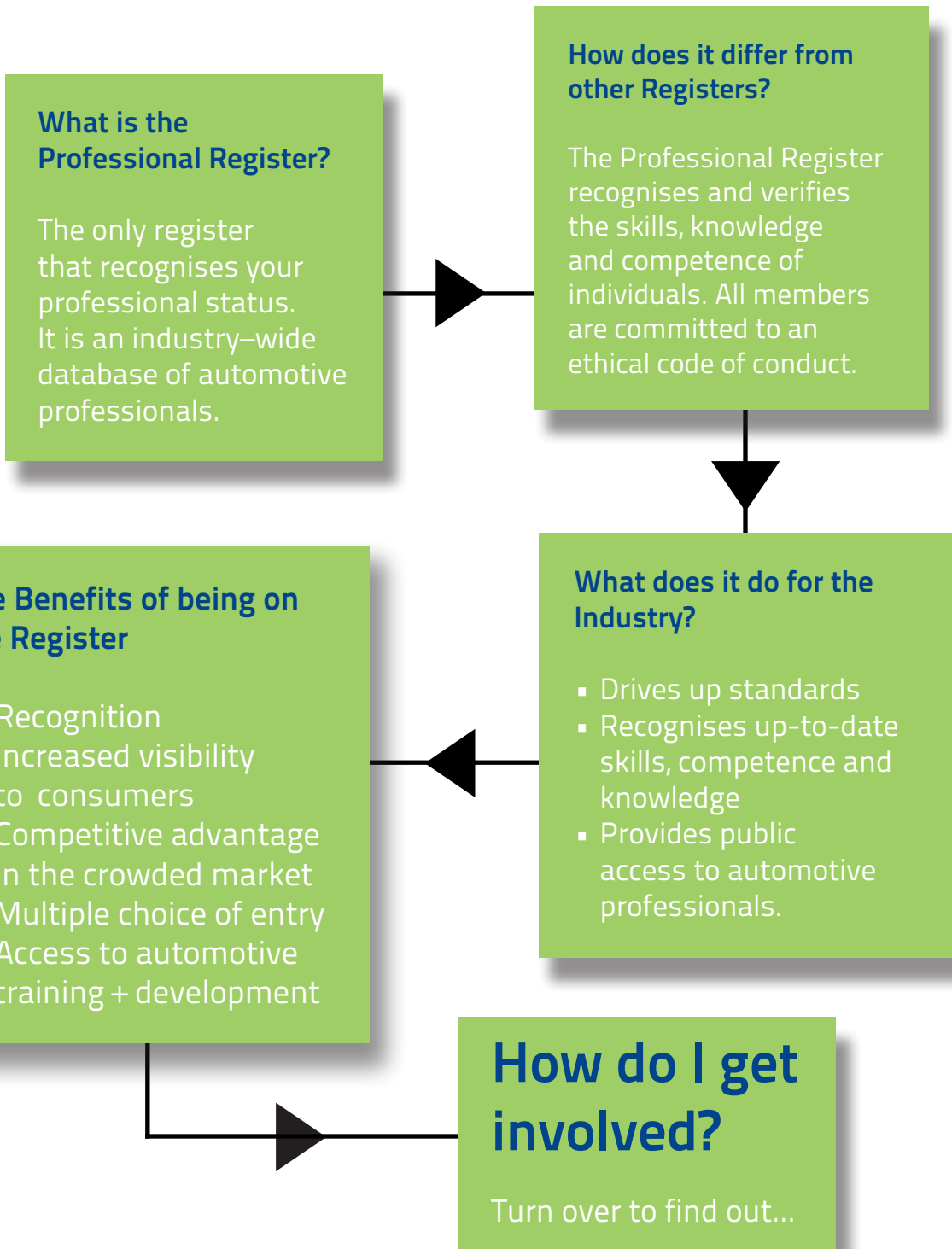


The IMI Professional Register



There are 2 entry routes on to the Professional Register

IMI Accreditation

Accreditation achievers are automatically included on the IMI Professional Register. Accreditation is valid for three years.

There are two types of accreditation:

IMI Accreditation for Managers (AMA)



AMA is the industry recognised, competency-based accreditation for Management & Leadership. There are 3 levels of management.

IMI Accreditation for Technicians (ATA)



ATA is a national accreditation scheme, governed by the IMI, which tests the current competence of individuals working in the retail automotive industry. There are 16 routes within the ATA scheme, each with different career levels.

IMI Membership

The IMI recognise the qualifications and experience that have been gained in the motor industry which fulfil the criteria to become an IMI member. IMI Membership shows colleagues and employers that you are a recognised industry professional, that you are serious about your career, business and the industry.

There are five grades of membership available:

- Fellow FIMI
- Member MIMI
- Associate AMIMI
- Licentiate LIMI
- Affiliate AffIMI*

Members that hold a Licentiate level or above are placed on the Professional Register. *Affiliate members may be able to upgrade as they gain future experience and additional qualifications.



Good for your **customers**, good for the **industry** and good for **you**.



THE INSTITUTE OF THE
MOTOR INDUSTRY

For information about how to join or to check and update your details
visit: www.imiregister.org.uk/good4u